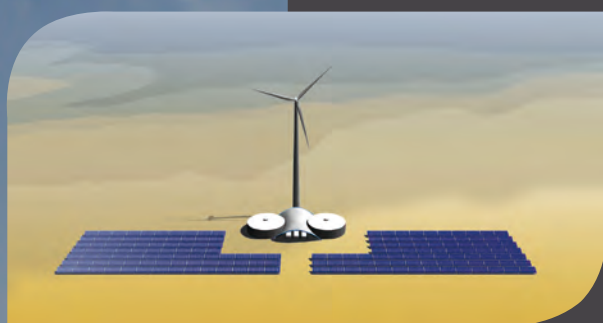


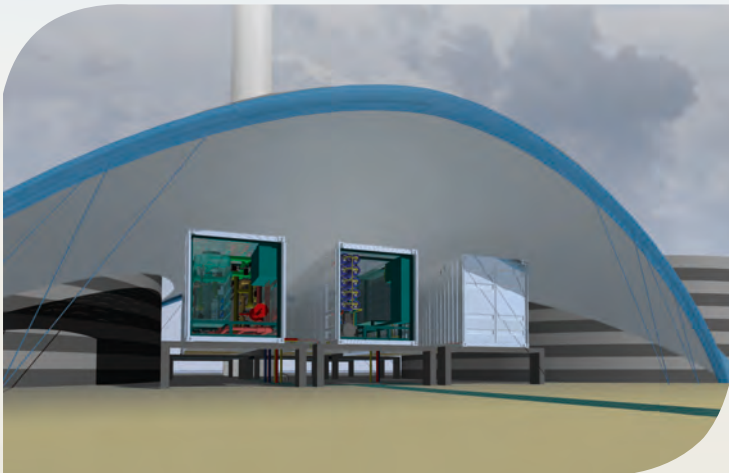
SYNWATER®

desalination by renewables



SYNLIFT
Industrial Products
GmbH & Co. KG

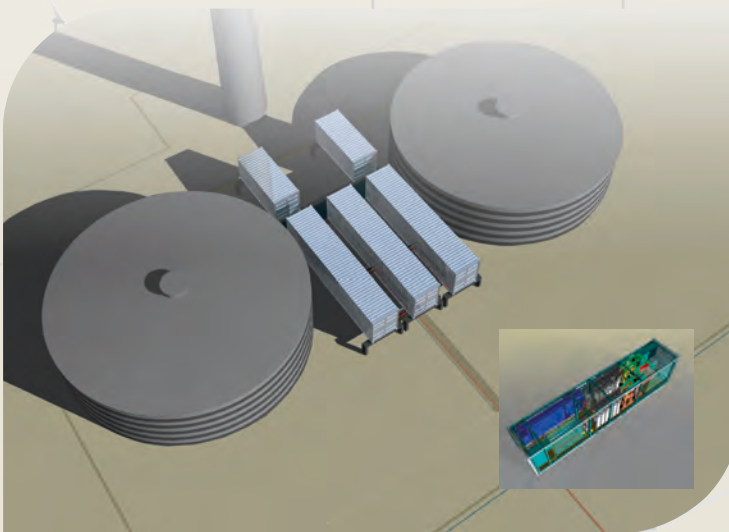
info@synlift.de
www.synlift.de



SYNWATER® systems

are grid-connected seawater desalination (RO) plants significantly powered by project integrated wind and/or solar (PV) power. Medium plant capacities are also available as brackish water and off-grid applications.

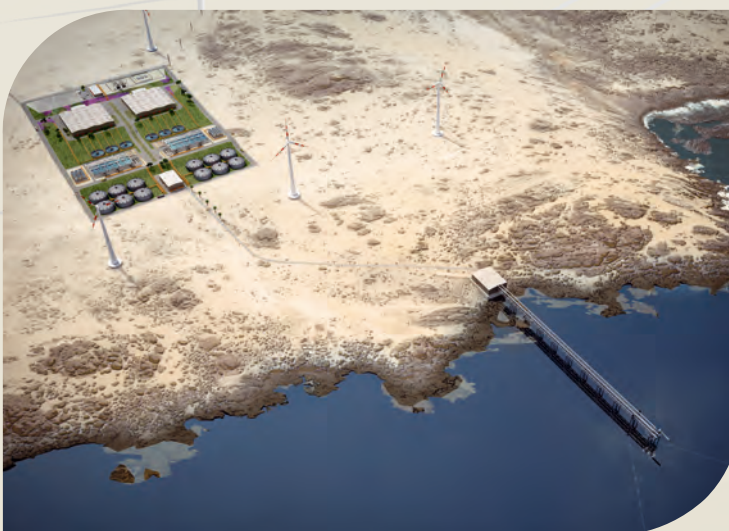
The load management SYNWATER®LM together with the highly flexible system modules guarantee a smooth adaptation of the RO process to the fluctuating renewable energy (RE) supply, allowing a high rate of RE self-consumption for the process.



Medium plant capacities

compactly arranged with one RE system (wind turbine or PV installation) located directly adjacent the project site (see front page):

Modules	50/100/200/400/800 m ³ /d (average production) 100/200/400/600/1,600 m ³ /d (peak production) type: containerized
Plant configuration	
Plant capacity	100 – 2,400 m ³ /d
Wind turbine capacity	approx. 100 – 1,000 kW
Solar (PV) capacity	approx. 100 – 2,000 kW
Multi-day storage tank	1– 3 daily productions



Large plant capacities

distributed arranged with wind farm (PV installations alternatively) located in the project area (see figure beside):

Modules	individually designed with medium/high penetration upgrade option type: inhouse
Plant configuration	
Plant capacity	2,500 – 250,000 m ³ /d
Wind turbine capacity	approx. 1 – 100 MW
Solar (PV) capacity	approx. 2 – 200 MW
Multi-day storage tank	individually designed

SYNLIFT Industrial Products GmbH & Co. KG

Sellostr. 15B · D-14471 Potsdam, Germany
fon: +49 331 979 270 82 · info@synlift.de